

New as of:

03.2012

CEREC Connect SW

Operator's Manual
Software Version 4.1x

English



Table of contents

1	Introduction.....	6
1.1	Dear Customer,.....	6
1.2	Copyright and trademark.....	6
2	General information.....	7
2.1	General safety information.....	7
2.2	Structure of the manual.....	7
2.2.1	Identification of the danger levels.....	7
2.2.2	Formats and symbols used.....	8
2.2.3	Conventions.....	8
2.2.4	Formats of the manual.....	9
2.3	User interface.....	10
2.3.1	Phase bar.....	11
2.3.1.1	ADMINISTRATION.....	11
2.3.1.2	ACQUISITION.....	11
2.3.1.3	MODEL.....	11
2.3.1.4	CONNECT.....	11
2.3.2	Object bar.....	12
2.3.3	Tool wheel.....	12
2.3.4	Step menu.....	12
2.3.5	System menu.....	13
2.3.6	The start window.....	13
2.3.7	Workflow path.....	13
3	Getting started.....	14
3.1	Installing the software.....	14
3.2	Uninstalling the software.....	14
3.3	Copy protection.....	15
3.4	Starting the software.....	15
4	Configuration.....	16
4.1	Devices.....	16
4.1.1	CEREC Bluecam.....	16
4.1.1.1	Resetting settings.....	17
4.1.1.2	Calibration.....	17

4.2	Options	17
4.2.1	Odontogram	17
4.2.2	Reset notes	17
4.2.3	Auto-hide the page palette	17
5	System menu.....	18
5.1	Saving the impression	18
5.2	Saving the impression under a different name.....	19
5.3	Importing an impression	19
5.4	Exporting an impression.....	19
5.5	License manager.....	20
5.6	Configuration	20
5.7	Window mode.....	20
5.8	Current program version	20
5.9	Closing the software.....	20
6	Start window	21
6.1	Creating a new patient	21
6.2	Patient search	22
6.3	Editing patient data.....	22
6.3.1	Editing a patient card	22
6.3.2	Deleting patients	22
6.3.3	Deleting the impression.....	22
6.3.4	Opening an impression	23
6.3.5	Adding a new impression	23
7	Page palette	24
7.1	Views.....	24
7.2	Tools.....	24
7.2.1	Buccal registration.....	25
7.2.2	Cutting off model regions	25
7.2.3	Resetting changes	26
7.2.4	Trimming	26
7.2.5	Entering the preparation margin.....	27
7.2.6	Tool wheel.....	27
7.3	Displaying objects	28
7.4	Analysis tools	29

8	ADMINISTRATION phase	31
9	ACQUISITION phase	32
9.1	Image catalogs	32
9.1.1	Working with the image catalog	33
9.1.2	Adding image catalogs.....	36
9.1.3	Recycle bin.....	36
9.2	Camera view	37
9.3	3D Preview	37
9.4	Taking the scan.....	38
9.4.1	Switching CEREC camera on/off	38
9.4.2	Camera support	38
9.4.3	Preparing the optical impression.....	39
9.4.4	Acquire with the CEREC camera	40
9.4.5	Supplementary optical impressions	41
9.4.6	Angled optical impressions	42
9.4.7	Acquiring end teeth	42
9.4.8	Full arch acquisition	42
9.4.9	Acquiring an impression.....	43
9.4.10	Finishing the phase	43
10	MODEL phase	44
10.1	Editing the model	44
10.2	Buccal registration.....	44
10.3	Finishing the phase	47
11	CONNECT phase	48
11.1	Sirona Connect portal	48
11.1.1	Log in to the portal	48
11.1.2	Check restoration information	48
11.1.3	Enter order data	48
11.1.4	Add additional information.....	49
11.1.5	Shopping cart.....	49
11.1.6	Order list.....	49

12	Additional functions	50
12.1	Importing files from CEREC Connect SW 4.X software into CEREC SW 4.X software	50
	Index.....	51

1 Introduction

1.1 Dear Customer,

Thank you for deciding to purchase CEREC Connect SW software from Sirona.

You can use the CEREC Connect SW software in combination with the Internet Portal and CEREC AC acquisition unit to create digital impressions and to send them to your partner laboratory via the portal. Any type of restoration can be manufactured from your impressions there. Your laboratory can then decide whether to produce the restorations directly from our digital impression or, if necessary, whether to produce a physical model in-house with inLab MC XL or to order one from infiniDent, in order to complete the work. Models are always required when you order a veneer crown or a veneer bridge from your laboratory (e.g. made of zirconia or metal etc.).

It is not possible to design and mill restorations with this software.

Improper use and handling can create hazards and cause damage. Please read and follow this document carefully. You should always keep it within reach.

To prevent personal injury or material damage, it is important to observe all safety information.

To safeguard your warranty claims, please complete the attached **Installation Report / Warranty Passport** when the system is handed over and send it to the indicated fax number.

Your
CEREC Connect SW 4 Team

1.2 Copyright and trademark

Copyright

© Sirona Dental Systems GmbH 2011. Alle Rechte vorbehalten.

The information contained in this manual may be changed without notice.

The software and all related documentation are protected by copyright. You must therefore handle it in the same way as any other protected material.

Anyone who copies this software to any medium for any purpose other than his own personal use without the written permission of Sirona Dental Systems will be liable to prosecution.

Trademarks

Microsoft® and Windows 7® are registered trademarks.

Windows™ is a trademark of Microsoft Corporation.

All other trademarks are the property of their respective holders.

2 General information

Please read this document completely and follow the instructions exactly. You should always keep it within reach.

Original language of the present document: German

2.1 General safety information

Only use original software

Only use original software or software which has been released by Sirona. To produce restorations, manipulated or non-released software components must not be used.

Software and software components must not be installed using incorrect data.

Please check that each installed component has been granted approval in its country. Contact your dealer for more information.

Model to be checked by trained personnel

Each model which is created with this software must be checked for suitability by a trained person (e.g. dental technician or dentist).

For the USA only

CAUTION: According to US Federal Law, this product may be sold only to or by instruction of physicians, dentists, or licensed professionals.

2.2 Structure of the manual

2.2.1 Identification of the danger levels

To prevent personal injury and material damage, please observe the warning and safety information provided in this document. Such information is highlighted as follows:

DANGER

An imminent danger that could result in serious bodily injury or death.

WARNING

A possibly dangerous situation that could result in serious bodily injury or death.

CAUTION

A possibly dangerous situation that could result in slight bodily injury.

NOTICE

A possibly harmful situation which could lead to damage of the product or an object in its environment.

IMPORTANT
Application instructions and other important information.

Tip: Information on making work easier.

2.2.2 Formats and symbols used

The formats and symbols used in this document have the following meaning:

<ul style="list-style-type: none"> ✓ Prerequisite 1. First action step 2. Second action step or ➤ Alternative action ↵ Result 	Prompts you to do something.
See "Formats and symbols used [→ 8]"	Identifies a reference to another text passage and specifies its page number.
• List	Designates a list.
"Command/menu item"	Identifies commands, menu items or quotations.

2.2.3 Conventions

Example	Meaning
Clicking	Pressing once and releasing the left mouse button or the left trackball button on the acquisition unit (or foot switch).
Double-clicking	Pressing twice quickly in succession and releasing the left mouse button or the left trackball button on the acquisition unit (or foot switch).
Moving the mouse in one direction	On the acquisition unit: Moving the trackball in the corresponding direction.
Seizing a point	Pressing the left mouse button (left trackball button on the acquisition unit) and keeping it pressed.
For acquisitions with the CEREC Bluecam: Actuate foot switch	The same function as: Pressing the left trackball button on the acquisition unit or the left mouse button.
"Ctrl+N"	On the keyboard: Press the Ctrl and N keys simultaneously.
Drag & drop	(Drag & drop) Press and hold an element (e.g. pictograph), and drop onto new potential destination.



2.2.4 Formats of the manual

You can access the manual via the Help button or by pressing "F1".

A pdf version of the Operator's Manual can be found on the document CD provided and online at "www.cerec-connect.com". In the area "*DOWNLOADS*" / "*Downloads*" you can download the current manual.

This format is page-oriented and is well suited for printing out the desired pages.

2.3 User interface



Overview of the user interface

A	Phase bar	E	Object bar
B	System menu	F	Image catalog (can only be activated in "ACQUISITION" phase)
C	Page palette	G	Main window
D	Step menu	H	Tool wheel

2.3.1 Phase bar

The workflow is illustrated in the software in four phases.



Phase bar

- ADMINISTRATION
- ACQUISITION
- MODEL
- CONNECT

2.3.1.1 ADMINISTRATION



In this phase, you can perform the following:

- Create restorations and determine their type
- Determine the tooth number

2.3.1.2 ACQUISITION



In this phase, you can perform the following:

- Creating acquisitions with the CEREC camera
 - lower jaw,
 - upper jaw,
 - buccal bite registration
- View a 3D preview of the acquisitions

2.3.1.3 MODEL



In this phase, you can perform the following:

- The buccal registration of the bite situation
- Adjust the virtual models
- Draw and edit preparation margins
- Determine the insertion axes of the restorations

2.3.1.4 CONNECT



In this phase, you can log in to the Sirona Connect portal (see "Sirona Connect portal [→ 48]").

You can open this phase by clicking in the phase bar on the "CONNECT" phase or on the double arrow in the step menu.

2.3.2 Object bar

The buttons for restoration selection are located in the object bar.

Each restoration is represented by a tooth with the corresponding tooth number. You can switch back and forth between the teeth by clicking on the corresponding tooth symbol.

2.3.3 Tool wheel

The tool wheel makes the standard tools available in order to simplify access. The tools currently available vary depending on the current step.

2.3.4 Step menu

Each phase is divided into steps. They are shown in the step menu at the bottom edge of the screen. The step menu changes depending on which phase the current restoration is in.

This menu guides you through the process step-by-step.

The double arrow keys can be used to switch between steps and phases.



Mandatory steps

Mandatory steps are marked with a red or green bar.

Red bar: The step has not yet been completed successfully.

Green bar: The step has been completed successfully.

Optional steps

Optional steps do not have colored bars.

They can be shown/hidden using the button on the left of the step menu.



2.3.5 System menu



In the system menu, you can perform the following:

- Switch to the start window to start a new case
- Save case
- Save the case under a different name
- Import case
- Export case
- Open license manager
- Configure hardware and software
- Change window mode
- Retrieve software information
- Closing the software

2.3.6 The start window

In the start window, you can perform the following:

- Create or select patients
- Edit patient data
- Patient search
- Open impressions
- Delete impressions
- Add impressions

2.3.7 Workflow path

The workflow path in the software is not strictly linear. You can switch to any active phase using the phase bar or switch back and forth between individual steps using the step menu. For example, if you notice during the acquisition that there is a crown rather than an onlay, you can return to the administration and simply change the restoration type.

3 Getting started

3.1 Installing the software

- ✓ The PC is powered up and all programs are terminated.
- ✓ You have downloaded the installation file from the Internet and saved it to the device.
- 1. Navigate to the location of the installation file.
- 2. Unzip the zip file and save the installation files.
- 3. Double-click the "setup. exe" file.
- 4. Select the language of the installation and click the button marked "OK".
 - ↳ The installation wizard opens.
- 5. Click on "Next".
 - ↳ The license agreement is shown.
- 6. Confirm the license agreement with the "Yes" button.
 - ↳ The program continues the installation routine.
- 7. Select "Full Installation".

NOTICE

Installing DirectX

If DirectX is not yet installed on your computer, it will be installed now. Accept the license agreement and decide whether the computer is to be restarted now or later.

- 8. After installation, you can display the "ReadMe" file by ticking or unticking the appropriate check box.
- 9. Click on the "Finish" button.

3.2 Uninstalling the software

- ✓ The program is closed.
- 1. Click on "Start / All Programs / Sirona Dental Systems / CEREC Connect / Deinstallation" to uninstall the software.
 - ↳ During the uninstall procedure, you will be asked whether you want to delete the patient data or the entries in the registration database (e.g. the calibration data).
- 2. Depending on your decision, click either "Yes" or "No".
 - ↳ The software is uninstalled.

3.3 Copy protection

The software can be started only when the USB license stick is plugged in. The USB license stick is included in the scope of supply of the units. If you require additional licenses, please contact your dealer.

Always keep the USB license stick near the unit.

All authorizations (milling, interface, software licenses) can be installed as electronic licenses on the USB license stick. You must enter a 25-digit license key for this purpose.

You will receive the license key along with the unit. Alternatively, you can order it separately from your dealer.

Following an update, you may require a new license that is not available on your USB license stick. For more information, refer to the section on License manager [→ 20].

IMPORTANT

Software license for CEREC Connect is pre-installed

For the CEREC Connect software, no separate license needs to be installed, as it is pre-installed on all USB license sticks.

3.4 Starting the software

- ✓ The CEREC Connect SW software is installed. You will find the start icon on the desktop.
 - ✓ The USB license stick is connected with a valid, current license.
 - Double-click the CEREC Connect SW start icon.
- or
- Click on "Start / All Programs / Sirona Dental Systems/ CEREC Connect / CEREC AC Connect 4".
- ↪ The software is started.

4 Configuration

The "Configuration" menu contains the following sub-menus:

- "Devices"
- "Options"

4.1 Devices



All connected devices can be displayed and configured under the menu item "Devices".

A green check mark on a device indicates its availability.

Refresh status

With the "Refresh Devices" button, you can

- refresh the status or
- check the current availability of a device.

4.1.1 CEREC Bluecam

Under the menu item "Camera", CEREC Bluecam can be set up.

Setting	Description
Shake tolerance	<ul style="list-style-type: none">• Set motion sensitivity for automatic activation.• The more stringent the setting, the longer you have to hold the camera still before the next acquisition will be taken.
Auto-delete rejected images	<ul style="list-style-type: none">• Images that could not be set against/overlaid with the current acquisitions are automatically moved to the Recycle Bin.
Auto-stitch rejected images	<ul style="list-style-type: none">• New acquisitions that cannot be set against/overlaid with the last five images will be checked with all subsequent images.• This option uses computing power and, with a large quantity of images, can result in loading periods while the computing takes place.

Accepting settings

- Click on the "Ok" button.

Discarding settings

- Click on the "Cancel" button.

4.1.1.1 Resetting settings

- Click on the *"Reset Camera Settings"* button.
 - ↳ The settings are reset to factory settings.

4.1.1.2 Calibration

1. Click on the *"Calibrate"* button.
2. Then simply proceed as prompted by the software.

4.2 Options

The menu item *"Options"* has the following subitems:

- Select odontogram (USA or international)
- Reset notes
- Auto-hide the page palette



4.2.1 Odontogram

You can set the odontogram using *"ADA/FDI Notation"*:

- International (*"FDI Notation"*)
- USA (*"ADA Notation"*)

4.2.2 Reset notes

Here, all warnings can be displayed again.

Setting	Description
YES	Displays all the deactivated warnings in the workflow again.
NO	Warnings which were previously hidden, remain hidden.

4.2.3 Auto-hide the page palette

The page palette will automatically be minimized if you use a tool.

These settings affect the MODEL phase.

Setting	Description
YES	<p>After selecting a tool, the palette will be minimized and only the symbol of the active tool will be displayed.</p> <p>The entire palette opens again when the mouse is positioned over it.</p> <p>Tip: Use this setting if you frequently work with the tool wheel.</p>
NO	Provided a tool is selected, the tool palette will always be displayed in its entirety and with all options.

5 System menu



In the system menu, you can perform the following:

- Switch to the start window to start a new case.
- Saving the impression
- Save impression as
- Importing an impression
- Exporting an impression
- Open license manager
- Configure hardware and software
- Change window mode
- Retrieve software information
- Closing the software

Opening system menu

➤ Move the mouse cursor to the top of the window.

or

- Click on the system menu button.
- ↪ The system menu is displayed.

Closing system menu

➤ Click on the system menu button.

or

- Click into the main window with the left mouse button.
- ↪ The system menu is closed.

5.1 Saving the impression

In this window, you can save the current optical impression.

- Select "Save Case" in the system menu.
- ↪ The impression is saved.



5.2 Saving the impression under a different name

This dialog allows you to save the current optical impression under a new name or assign it to a different patient.



1. Select *"Save Case As..."* in the system menu.
 - ↳ The *"Save as..."* dialog box opens.
2. Enter a name for the optical impression.
3. Select the appropriate patient.
4. Click on the *"OK"* button.

5.3 Importing an impression

- ✓ An existing optical impression is located on your acquisition unit (or data storage medium).
1. Click the *"Import Case..."* button in the system menu.
 - ↳ A standard Windows file dialog box opens.
 2. Select the folder where the optical impression is located.
 3. Select the relevant file.



NOTICE

File types

If the selected file (*.rst) is an optical impression, this will be opened. If not, it will not open, and an error message will be displayed.

4. Click the *"Open"* button
5. Assign a name to the optical impression.
6. Click on the *"OK"* button.
 - ↳ The optical impression is imported and opened.

5.4 Exporting an impression

You can save an optical impression in a compressed format in any location.



- ✓ You have opened an optical impression.
1. Select *"Export Case..."*.
 - ↳ A standard Windows file dialog box opens.
 2. Select the target folder to which you want to export the optical impression.
 3. Assign a name to the optical impression.
 4. Click on the *"Save"* button.
 - ↳ The optical impression is exported.

If you want to transfer the optical impression from your acquisition unit to another PC (e.g. in order to upload it to the Internet portal), you can use a USB stick for this purpose.



5.5 License manager

The license manager is used for the installation of new software licenses on the USB license stick. To do this, start the license manager via the system menu and follow the instructions on the screen. Keep the license certificate with 25-digit license key ready, which you either obtained with the unit or ordered separately from your dealer.

To activate the license you must have an Internet connection and the USB license stick must be connected.

IMPORTANT

Software license for CEREC Connect is pre-installed

For the CEREC Connect software, no separate license needs to be installed, as it is pre-installed on all USB license sticks.

5.6 Configuration

The configuration is described in the chapter "Configuration".



5.7 Window mode

The "*Window Mode*" function can be used to exit full-screen mode or enter it again.



5.8 Current program version

The "*About*" function contains information about the current program version.



5.9 Closing the software

The "*Exit*" function can be used to close the software.



6 Start window

In the start window, you can perform the following:

- Create or select patients
- Edit patient data
- Patient search
- Open impressions
- Delete impressions
- Add impressions

Switching to the start view

You can switch to the start view at any time.

1. Open the system menu.
2. Click on the *"Start Screen"* button.



6.1 Creating a new patient

In the data structure, a patient is uniquely identified by one of the following two entries:

- Surname, first name and date of birth
or
- Patient ID

Adding patients

1. Click on the *"Add New Patient"* button.
↳ An empty patient card is opened.
2. Enter a surname, first name, and date of birth.
or
➤ Enter the patient ID.
↳ Once you have entered enough information, the bar in the *"Edit Patient"* step turns from red to green.
3. Click on the *"Add New Case"* button.
↳ The program switches over to the *"ADMINISTRATION"* phase.



6.2 Patient search

Displaying all patients

The *"Show All Patients"* function can be used to display all patients.



Searching for individual patients

You can view individual patients by searching for them

1. Click into the search text box.
2. Enter the surname or the patient ID.
 - ↳ The program now shows all the search results.



6.3 Editing patient data

6.3.1 Editing a patient card

- ✓ You have found the patient with the search function.
1. Click on the patient card.
 - ↳ The patient card/case view is opened for editing.
 3. Carry out the changes.
 4. Confirm your changes by clicking the *"Ok"* button.
 - ↳ The changes are saved in the memory.
 5. Click the double arrow on the left side of the step menu.
 - ↳ The patient card/case view is displayed.



6.3.2 Deleting patients

- ✓ You have found the patient with the search function.
1. Click on the patient card.
 2. Click on the *"Delete Patient"* step in the step menu.
 3. Confirm the deletion by clicking the *"Ok"* button.
 - ↳ The patient is deleted.



6.3.3 Deleting the impression

- ✓ You have found the associated patient with the search function.
1. Click on the patient.
 2. Select the impression.
 3. Click on the *"Delete Case"* step in the step menu.
 4. Confirm the deletion by clicking the *"Ok"* button.
 - ↳ The impression is deleted.



6.3.4 Opening an impression

- ✓ You have found the associated patient with the search function.
- 1. Click on the patient.
- 2. Select the impression.
- 3. Click on the *"Open Case"* step in the step menu.
 - ↳ The impression is opened.



6.3.5 Adding a new impression

- ✓ You have found the associated patient with the search function.
- 1. Click on the patient.
- 2. Click on the *"Add New Case"* step in the step menu.
 - ↳ The program switches over to the *"ADMINISTRATION"* phase.



7 Page palette

The page palette offers you various different functions, depending on the current step.

7.1 Views

You can use the *"View Options"* button to display six predefined views.

- *"Mesial"*
- *"Distal"*
- *"Buccal" / "Labial"*
- *"Lingual"*
- *"Cervical"*
- *"Occlusal" / "Incisal"*

Changing the view

1. Click on the *"View Options"* button.
2. Click on one of the proposed views.
 - ↳ The virtual model rotates to the corresponding view.

Enlarging or reducing the view

1. Click on the *"View Options"* button.
2. Position the mouse pointer over the center tooth icon and press and hold the left mouse button.
 - ↳ The icon then changes to a magnifying glass.
3. Pull the mouse button up or down.
 - ↳ The virtual model is then enlarged or reduced.

Tip: You also can use the mouse scrollwheel to enlarge or reduce the view.

7.2 Tools

The most important tools are also offered to you in the tool wheel. For more information on the tool wheel, refer to the section Tool wheel [→ 27].

You will find all tools as a submenu under *"Tools"*.

Tip: To prevent automatic minimization of the tool window, go to the configuration under *"Options"* and select the option 'No' in the *"Tool-Menu"*.

Tip: You can cancel the current tool with the stop icon (top right).

Undo and reset

With the *"Undo"* button in the tools you can undo the last change made.

With the *"Reset"* button you can reset changes that were made with the tool.



7.2.1 Buccal registration

Displacing a buccal image

With the *"Drag Buccal"* function, you can displace the buccal image.



1. Click on the *"Buccal"* button.
2. Click on the *"Drag Buccal"* button.
3. Click on the buccal image and displace it to the same region on the upper and the lower jaw.

↳ The image is accepted.

Tip: If an image is not accepted, align the jaw buccally. This enables better overlapping.

If registration is still not possible, check whether the buccal sections in the jaws and in the buccal image are sufficient.

4. If the image was accepted, move the image to the corresponding region of the opposite jaw.

Rotating a buccal image

With the *"Flip Buccal Impression"* function, you can rotate the buccal image.



1. Click on the *"Buccal"* button.
2. Click on the *"Flip Buccal Impression"* button.

↳ The buccal image is then rotated.

7.2.2 Cutting off model regions



Regions of the model can be cut off using the *"Cut"* function. The cut plane lies parallel to the screen plane.

Remove model area

With the *"Discard Part"* function, model areas can be removed.

When performing this activity, be careful not to accidentally cut out any areas that e.g. are located behind the model or are otherwise cut away from the line.

1. Click on the *"Cut"* button.
2. Begin the cut line with a double-click.
3. Click to set additional points.
4. Finish the cut by double clicking.

↳ The model area is cut off.

Invert model area

With the *"Invert Selected"* function, the model area that is cut out can be inverted.

- ✓ The *"Cut"* tool is selected.
- ✓ You have created a cut.
- Click on the *"Invert Selected"* button.
 - ↳ The model area which was cut out is displayed.
 - The rest of the model area is hidden.

Tip: You can invert the model area that is cut out by double-clicking on the semitransparent cut-out area.

7.2.3 Resetting changes



The *"Reset Model"* function is used to reset all changes.

1. Click on the *"Tools"* button.
2. Click on the *"Reset Model"* button.
 - ↳ The program will ask whether you really want to reset all changes.
3. Confirm with *"Ok"*.

7.2.4 Trimming



With the *"Trim"* function, you can isolate the preparation. You can thus e.g. draw in the preparation margin more easily. Trimmed image regions can be optionally displayed and hidden later on.

Hiding image regions

The *"Discard Part"* function enables you to hide image regions.

The trim line also can be placed over the preparation line. Only the region underneath the preparation will then be hidden automatically. The prepared region remains fully intact.

1. Click on the *"Trim"* button.
2. Click on the *"Discard Part"* button.
3. Start by double-clicking in the vicinity of the model or on the model.
4. Click to set additional points. Draw the line close to the preparation around which you want to trim.
5. Finish the line by double clicking.
 - ↳ The smaller region of the model is hidden.

Inverting an image region

With the *"Invert Selected"* function, the hidden image region can be inverted.

- ✓ An image region has been hidden using the *"Trim"* tool.
- Click on the *"Invert Selected"* button.
 - ↳ The hidden image region will be shown.
 - The image region shown will be hidden.

Tip: You can invert the hidden image region by double-clicking on the semitransparent hidden region.

7.2.5 Entering the preparation margin

For further information on using this tool, see the section Entering the preparation margin.

Automatic edge detection

With *"Margin" / "Auto"*, you can work with automatic edge detection.



1. Click on the *"Margin"* button.
2. Click on the *"Auto"* button.
 - ↳ Automatic edge detection is switched on.

Manual drawing

With *"Manual"* you can draw in the preparation margin manually. With this technique, you must place the individual points close together in order to clearly define the contour of the preparation margin even in difficult situations.



- ✓ The *"Margin"* tool is open.
- Click on the *"Manual"* button.
 - ↳ The manual technique is switched on.

Manual drawing with intensity image

With *"Manual with intensity image"* you can manually draw in the preparation margin on the intensity image.



- ✓ The *"Margin"* tool is open.
- Click on the *"Manual with intensity image"* button.
 - ↳ The manual technique with intensity image is switched on.

Tip: As long as the *"Margin"* tool is activated, you can switch back and forth between the drawing options by pressing the space bar.

7.2.6 Tool wheel

The tool wheel makes the standard tools available in order to simplify access. The tools currently available vary depending on the current step.

Working with the tool wheel

- ✓ You are now in the MODEL phase.
- 1. Click inside the main window with the right mouse button.
 - ↳ The tool wheel opens at the mouse pointer.
- 2. Position the mouse above the desired tool.
 - ↳ For tools with several variants, all variants will be displayed.
- 3. Click on the desired tool.
 - ↳ The desired tool is then activated.

7.3 Displaying objects

Upper jaw



With the *"Upper Jaw"* button, you can display and hide the upper jaw.

1. Click on the *"View Options"* button.
2. Click on the *"Upper Jaw"* button.
 - ↪ The upper jaw is displayed or hidden.

Lower jaw



With the *"Lower Jaw"* button, you can display and hide the lower jaw.

1. Click on the *"View Options"* button.
2. Click on the *"Lower Jaw"* button.
 - ↪ The lower jaw is displayed or hidden.

Display upper/lower jaw transparently

You can adjust the transparency of the upper/lower jaw continuously.



1. Click on the *"View Options"* button.
2. Place the mouse pointer on the appropriate button, press and hold the left mouse button and move the mouse up or down.
 - ↪ The transparency of the jaw concerned is changed.

Trimmed region



With the *"Trimmed Model"* button, you can display and hide the trimmed region.

- ✓ You have trimmed a region in the MODEL phase.
- Click on *"Trimmed Model"*
 - ↪ The trimmed region of the virtual model is displayed or hidden.

7.4 Analysis tools

Contact surfaces on the virtual model

Using the *"Model Contacts"* button, the contact surfaces on the virtual model can be displayed or hidden.



1. Click on the *"Analyzing Tools"* button.
2. Click on the *"Model Contacts"* button.
 - ↳ The contact areas on the model are displayed or hidden.

Penetration/pressure:	■	> 100 µm
	■	100 - 50 µm
	■	50 - 0 µm
Distance:	■	0 - 50 µm
	■	50 - 100 µm
	■	> 100 µm

Side and bottom surfaces

Using the *"Model Box"* button, the virtual model can be displayed without the sides and bottom.



1. Click on the *"Analyzing Tools"* button.
2. Click on the *"Model Box"* button.
 - ↳ The virtual model is displayed without side and bottom surfaces.

Cursor details

Via the *"Cursor Details"* button, you can have the height and thickness of the restoration displayed on the mouse cursor.



1. Click on the *"Analyzing Tools"* button.
2. Click on the *"Cursor Details"* button.
 - ↳ The height and thickness of the restoration are displayed on the mouse cursor and updated in real time.

Depending on the type of restoration, the following information is displayed:

Height	Distance from this point to the bottom of the model
Fissure height	Minimum thickness in fissure.
Thickness	Thickness of the restoration at this point
With anatomical connectors	Smallest section



Distance

You can use the *"Distance"* button to measure distances.

1. Click on the *"Analyzing Tools"* button.
2. Click on the *"Distance"* button.
3. Click on the restoration to define the starting point and the end point.
↪ The distance is then displayed.

8 ADMINISTRATION phase

Selecting a restoration type

- Select the restoration type in the page palette: "*Single Restoration*" or "*Bridge Restoration*".

Single tooth restoration

- ✓ You have selected the restoration type "*Single Restoration*".
- 1. In the odontogram, select the appropriate tooth.
- 2. Select the restoration type.
- 3. Specify the production method, e.g. "veneered crown".
- 4. Confirm your entries by pressing "*Ok*".
- 5. If necessary, create further restorations.



Bridge restoration

- ✓ You have selected the restoration type "*Bridge Restoration*".
- 1. Choose the mesial abutment of the bridge.
- 2. Choose the distal abutment of the bridge.
 - ↳ The bridge is shown.
- 3. For each element of the bridge, determine whether there should be an abutment or a pontic by selecting the individual elements.
- 4. Specify the production method, e.g. "veneered bridge".
- 5. If necessary, create further restorations.



Finishing the ADMINISTRATION phase

- ✓ All restorations to be created are defined.
- ✓ The "*ACQUISITION*" phase is can be selected.
- Click on the "*ACQUISITION*" phase.



or

- Click on the double arrow.
- ↳ The program switches over to the "*ACQUISITION*" phase.



9 ACQUISITION phase

9.1 Image catalogs

Overview

In the "ACQUISITION" phase, three image catalogs are available as standard:

- Lower Jaw

- Upper Jaw

- Buccal



Opening the image catalog

1. Click on the icon of the desired image catalog.
2. Move the mouse cursor to the bottom edge of the screen.
 - ↳ The active image catalog is opened, the individual acquisitions are visible.

9.1.1 Working with the image catalog



In the image catalog all acquisitions are shown respective to their regions.

The first acquisition of an image catalog is called the reference acquisition and is marked with a dot (flag in the upper right corner of the frame). Acquire the image in the occlusal direction, as this acquisition determines the orientation of the virtual model.

The acquisitions are labeled as follows:

Symbol	Meaning
Green flag with check mark	Calculated / overlaid images
Green flag with dot	Reference optical impression
Blue flag	The attempted calculation / overlay is still being processed.
Red flag with exclamation mark	Calculation / overlay failed.
No flag	Hidden images

If you position the mouse over an acquisition, it will be shown in the camera view and highlighted in the 3D preview.

Scrolling through the image catalog



For each acquisition, a colored dot will be shown at the top of the image catalog.

Color	Meaning
Green	Calculated / overlaid images
Blue	The attempted calculation / overlay is still being processed
Red	Calculation / overlay failed
White	Hidden images

If the acquisitions can no longer be displayed in full in the image catalog, a scroll bar appears. You can use it to scroll through all acquisitions.

1. Click on the scroll bar and press and hold the mouse button.
2. Slide the scroll bar to the right or left.

Selecting images

- Click on the acquisition with the left mouse button.
Several images can be selected.
- ☞ The images are now selected.

Moving acquisitions

You can move acquisitions to other image catalogs using drag & drop.

1. Click on marked acquisitions and keep the mouse button pressed.
2. Drag your selection to the icon of the desired image catalog.
 - ↳ The program will ask whether you want to move or copy the acquisition.
3. Select *"YES"* to copy the acquisition or *"NO"* to move it. *"Cancel"* can be used to cancel the operation.
 - ↳ The acquisition will be ready for use in the corresponding image catalog.

Tip: You can copy or move all of the acquisitions contained in an image catalog. Simply click on the image catalog with the left mouse button and drag it to any other previously created folder.

Hiding images

- Click an acquisition with the right mouse button.
 - ↳ The acquisition is shown in gray.
The acquisition is no longer used for the 3D preview and virtual model creation.

You can make the acquisitions visible again by following the same process.

If the *"Ignored"* filter is active, the acquisition remains visible in the image catalog.

If the *"Ignored"* filter is deactivated, the acquisition is hidden (see Command filter [→ 35]).

Select command

The *"Select"* command enables you to:

- select all images
 - void the selection
 - invert the selection
1. Click the *"Select"* button in the image catalog.
 2. Click the appropriate button.

Edit command

The *"Edit"* command enables you to:

- copy
 - cut
 - insert
 - delete
 - hide
 - display
1. Select the acquisitions you want to edit.
 2. Click the *"Edit"* button in the image catalog.
 3. Click the appropriate button.

Command Advanced

The *"Advanced"* command enables you to:

- buffer the acquisition sequence (quadrant)
- merge 2 acquisition sequences (quadrants)
- change to the *"Impression Scan"* mode

Command	Description
<i>"Add Quadrant"</i>	<ul style="list-style-type: none">• Buffer the first acquisition sequence (quadrant).• Subsequently, another acquisition sequence can be taken.
<i>"Merge Quadrants"</i>	<ul style="list-style-type: none">• The current acquisition sequence is merged with the buffered sequence.

1. Click the *"Advanced"* button in the image catalog.
2. Click the appropriate button.

Command Filter

The *"Filter"* command enables you to:

- Switch the display of hidden acquisitions on/off
- Show or hide discarded acquisitions (offsetting/overlying not possible)

Command	Description
<i>"Ignored"</i> (active)	Hidden acquisitions are displayed.
<i>"Rejected"</i> (active)	Rejected acquisitions are displayed.

1. Click the *"Filter"* button in the image catalog.
2. Click the appropriate button.



9.1.2 Adding image catalogs

Using the *"Add Catalog"* button, you can create additional image catalogs.

1. Click on the *"Add Catalog"* button.
 - ↳ The possible image catalogs are displayed.
2. Click on the required image catalog.
 - ↳ The image catalog is displayed next to the standard image catalogs.

9.1.3 Recycle bin

Removing acquisitions

1. Select the acquisitions you want to remove.
2. Click on the *"Edit"* button.
3. Click on the *"Delete"* button.

or

- Grab the image with your mouse and move it using drag & drop to the recycle bin.

↳ The acquisition is sent to the recycle bin.

Tip: You can move the last acquisition to the recycle bin by right-clicking the image catalog icon.

Opening the recycle bin

In the recycle bin, you will see the acquisitions removed from the currently active image catalog.

1. Click on the icon of the image catalog, for which you wish to open the recycle bin.
2. Click on the icon of the recycle bin.
 - ↳ The recycle bin for the active image catalog is displayed.



Reusing acquisitions from the recycle bin

- Grab the image with your mouse and move it using drag & drop to the desired folder.

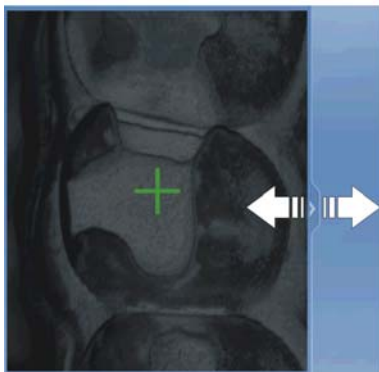
Tip: If you show/hide acquisitions in the recycle bin, they will be automatically moved back to the image catalog.

9.2 Camera view

Change window size

You can adjust the size of the camera view proportionally.

1. Click the arrow at the right edge with the mouse and hold down the mouse button.
2. Drag the camera view to enlarge or reduce it.



Height and intensity image

Acquisitions from the image catalog can be displayed as height or intensity images.



Height image



Intensity image

- ✓ The camera is switched off.
1. Click on the icons to switch between the height and intensity image.
 2. Position the mouse cursor over an acquisition in the image catalog.
 - ↳ The acquisition is shown in the camera view of the selected layout.

9.3 3D Preview

In the default setting, the data are displayed from the occlusal direction in the 3D preview.

You can freely select the viewing direction of the virtual model in the 3D preview window by using the mouse.

Rotating a 3D preview

1. Click on the 3D preview with the left mouse button and hold it down.
2. Move the mouse.
 - ↳ The 3D preview is rotated.

Moving the 3D preview

1. Click on the 3D preview with the right mouse button and hold it down.
 2. Move the mouse.
- ↳ The 3D preview is moved.

Zooming into/out of the 3D preview

1. Click on the 3D preview with the middle mouse button and hold it down.
 2. Move the mouse up or down as desired.
- ↳ The 3D preview is enlarged or reduced.

9.4 Taking the scan

9.4.1 Switching CEREC camera on/off

The CEREC camera is turned on automatically when you switch to the acquisition phase. If it is not used for some time, it will shut down.

- Click the camera icon to switch the CEREC camera on or off.



9.4.2 Camera support

Using the camera support gives you the following advantages:

- You obtain acquisitions free of motion blurring.
- You avoid damage to the prism.
- You avoid touching the prepared tooth.

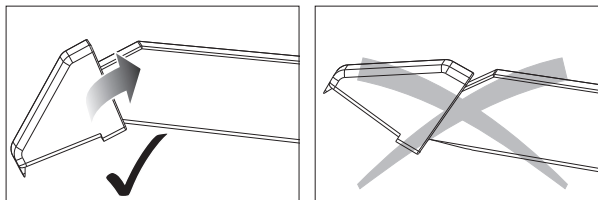
CAUTION

Using the camera support

Clean the camera support by wiping or spraying it with disinfectant prior to use. Designed for one-time use only.

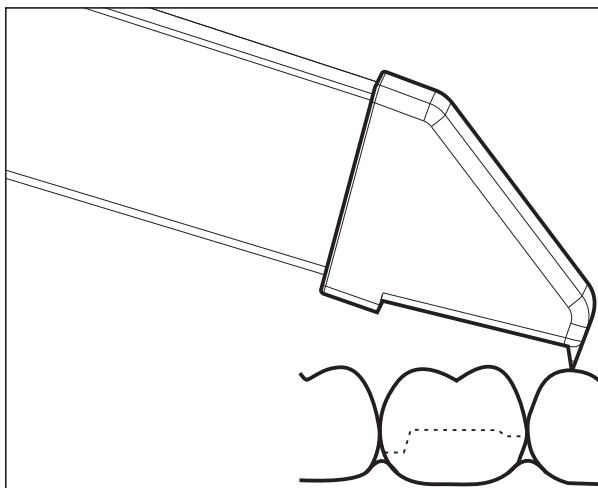
9.4.3 Preparing the optical impression

1. Push the camera support onto the camera as illustrated.



Pushing on the camera support

2. Position the 3D camera over the powdered preparation.



Supporting the 3D camera

3. Support the 3D camera with the front part of the camera support on a tooth so that you can hold it quietly during the acquisition phase.

NOTICE

Powder on the surface of the prism

If the prism touches powdered surfaces, then powder usually remains on the prism surface and generates dark spots in the image.

The powder can be wiped off from the prism with a soft cloth.

9.4.4 Acquire with the CEREC camera

With the CEREC camera you can switch between two acquisition modes:

- manual
- automatic

After being switched on, the CEREC camera is set to automatic acquisition control.

NOTICE

Image brightness

The image brightness during the scan is controlled automatically, so that there is always optimum image brightness, largely independent of the distance between the CEREC camera and the tooth.

The surroundings of the tooth to be acquired should be as weakly illuminated as possible. Avoid any type of external light. Switch off the dental light.

Changing from automatic to manual acquisition control

You can change from automatic to manual acquisition control.

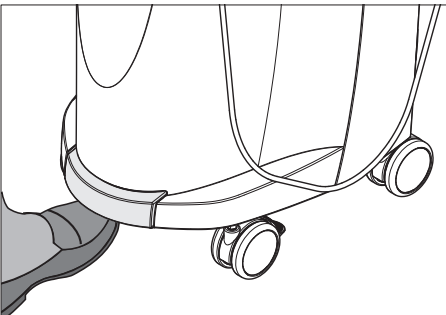
✓ You are now using automatic acquisition control.

1. Place the cursor on the camera icon.

2. Press the foot control upward and keep it pressed.

↵ A green cross appears in the live image. Manual acquisition control is active.

You can exit manual acquisition control in the same way.



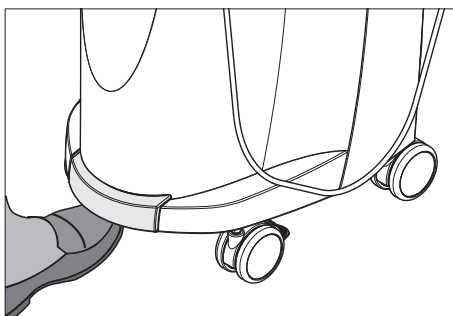
Automatic acquisition control

To help avoid blurred acquisitions caused by withdrawing the CEREC camera too early, an acoustic signal sounds as soon as the acquisition is completed. Make sure that neither the Windows volume control is at the lowest position nor "Sound off" is activated.

1. Position the CEREC camera above the powdered preparation as described.
2. Once a sharp acquisition is possible, images are generated and transmitted to the 3D preview automatically.
Observe undercuts on all lateral edge lines of the preparation.
3. Move the camera until all required images have been acquired.
 - ↳ The model is restored automatically in the 3D preview during the acquisition.
4. Then check the above points once again. Take care that the optical impression is **sufficiently bright, sharp** and **free of motion blurring**. If you do not observe these points, one of them may have a negative effect upon the subsequent procedure.

If you click the scan icon of the upper jaw, lower jaw or buccal registration, you can take additional acquisitions of the upper jaw, lower jaw or buccal registration.

Manual acquisition control



1. Press the foot control upward and keep it pressed.
 - ↳ A live video image appears with a green cross in the camera view.
2. Release the foot control.
 - ↳ The acquisition is automatically transferred to the 3D preview.
3. Additional acquisitions can be created by repeating steps 1 and 2.
 - ↳ The model is restored automatically in the 3D preview during the acquisition.
4. Then check the above points once again. Take care that the optical impression is **sufficiently bright, sharp** and **free of motion blurring**. If you do not observe these points, one of them may have a negative effect upon the subsequent procedure.

If you click the scan icon of the upper jaw, lower jaw or buccal registration, you can take additional acquisitions of the upper jaw, lower jaw or buccal registration.

9.4.5 Supplementary optical impressions

If the neighboring teeth are to be completely imaged as well, then the image catalog can be extended by acquisitions of these teeth. Two adjacent acquisitions must overlap by at least half an image.

9.4.6 Angled optical impressions

Additional angled optical impressions

Additional angled acquisitions are possible. They can be used to acquire regions that are concealed in the occlusal acquisition direction, or to acquire steep walls in more favorable angles.

IMPORTANT

Proximal undercuts

Proximal undercuts may make it impossible to seat an inlay.

The maximum permissible tilt angle for capturing an additional optical impression of the same area is 20°.

9.4.7 Acquiring end teeth

End tooth at the distal margin

When end teeth are restored, the end tooth should lie at the distal margin of the image field.

9.4.8 Full arch acquisition

The acquisitions for the whole jaw can be divided into two segments.

1. First record a quadrant from distal to mesial over the front teeth until the opposite 2.
2. Click the "Advanced" button in the image catalog.
3. Click on "Add Quadrant" to temporarily save the segment (see also "Working with the image catalog [→ 33]").
4. Now record the opposite quadrant, also from distal to mesial.
5. Click the image catalog ("Advanced") on the button "Merge Quadrants"
↳ The software assembles the two segments.



9.4.9 Acquiring an impression

Preparing an impression

- ✓ In certain circumstances, the impression must be cut free somewhat, so that the definition of the image of the CEREC camera is sufficient.
- If scannable silicon is not used, provide the area to be acquired with a matt finish to prevent reflections. For this purpose, use CEREC Optispray.

Acquiring an impression

1. Click on the icon of the desired image catalog.
2. Open the image catalog.
3. Click on the "Advanced" button.
4. Click on the "Impression Scan" button.
5. Start the acquisition procedure.
 - ↪ In the 3D preview, the model is displayed on both sides. The model preview is displayed in yellow, whereas the preview of the casting itself is shown in green.

As long as "Impression Scan" mode is active, acquisitions are inverted while creating the virtual model. "Impression Scan" mode is available for all image catalogs.

The various catalogs do not need to be acquired in the same mode.



9.4.10 Finishing the phase

- ✓ All necessary acquisitions are available (jaw, possibly opposing jaw, and buccal bite acquisition).
 - ✓ The "MODEL" phase is can be selected.
 - Click on the "MODEL" phase.
- or
- Click on the double arrow.
 - ↪ The program switches over to the "MODEL" phase.

10 MODEL phase

In the *"MODEL"* phase, the virtual models are reconstructed based on the acquired image catalogs.

If you would like to edit the model, change to the *"Edit Model"* step.

The *"Edit Model"*, *"Bite Registration"* and *"Set Model Axis"* refer to the entire model (upper and lower jaw).

All other steps in the *"MODEL"* phase refer to the restoration currently selected. These steps must be performed individually for each restoration.

10.1 Editing the model

This step is optional. To access this step, you must click on it.

In the *"Edit Model"* step, you can work with the following tool:

- *"Cut"*

The use of the individual tools is described in the section "Page palette [→ 24]".

10.2 Buccal registration

In this step, you see the virtual models of the jaw, opposing jaw, and the buccal acquisition. The buccal acquisition is placed in the center between the lower jaw and upper jaw.

In the *"Bite Registration"* step, you can work with the following tools:

- Drag Buccal
- Flip Buccal Impression

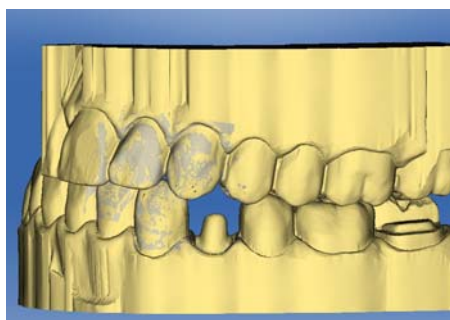
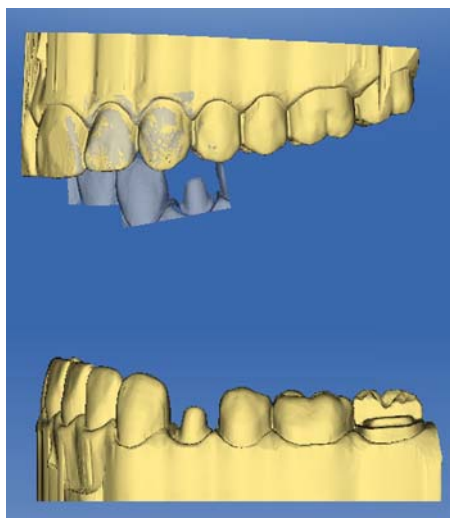
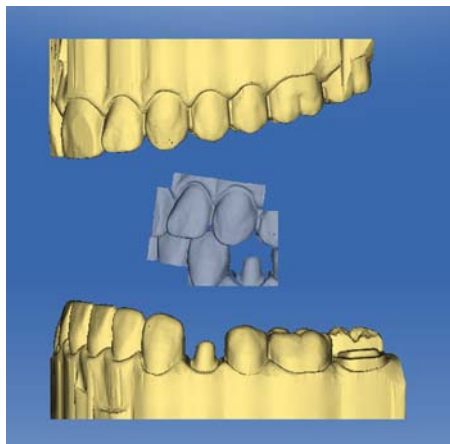
The use of the individual tools is described in the section Page palette [→ 24] .

For further information on the *"Flip Buccal Impression"* function, see the section Buccal registration [→ 45].

Rotating the lower and upper jaw

- Click in the blue area with the left mouse button and hold the button down.
 - ↳ The lower jaw and upper jaw can be rotated about the vertical axis simultaneously.
- Click on the lower jaw or upper jaw with the left mouse button and hold the button down.
 - ↳ The jaws can be freely rotated individually.

Registering the buccal acquisition on the lower jaw and upper jaw



1. Rotate both models so that you can see the overlap area of the buccal acquisition and of the upper jaw and lower jaw.
2. Now drag the buccal acquisition to the corresponding area of the upper jaw with the mouse and let go of the mouse button (drag & drop).

↪ The buccal acquisition automatically registers itself on the upper jaw. If the registration was successful, this will be indicated by a "leopard pattern". If the registration was not successful, the buccal acquisition returns to its original position. In this case, you must repeat the drag&drop procedure in order to find a better correlation surface.

3. Now click on the buccal acquisition once again and drag it onto the appropriate area of the lower jaw (drag & drop).

↪ If the registration was successful, this will be indicated by a "leopard pattern". If the registration was not successful, the buccal acquisition returns to its original position. In this case, you must repeat the drag&drop procedure in order to find a better correlation surface.

It is irrelevant whether you drag the buccal acquisition onto the lower jaw or onto the upper jaw first.

Rotating the buccal image

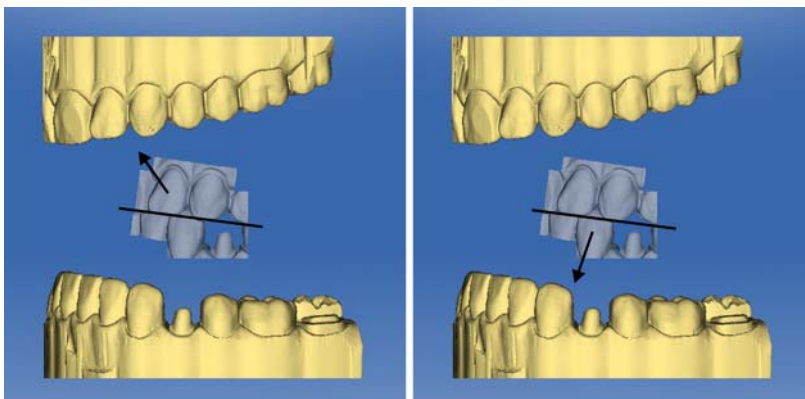
In some cases, the buccal acquisition may be displayed upside down in relation to the lower jaw and the upper jaw. Proceed as follows in such cases:

- Click on the upper area of the buccal image and drag it onto the lower model.

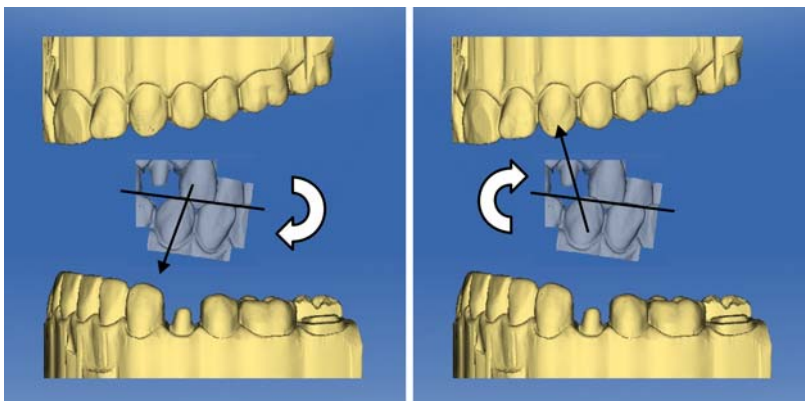
or

- Move the mouse via "Tools" onto the "Bite Registration" button and activate the "Flip Buccal Impression" command.
- ↪ The buccal acquisition will automatically flip, and you can then register it on the jaw using the drag & drop technique.

This works in the same way vice versa, i.e. if you click on the lower area of the buccal image and then drag it onto the upper model.



The buccal image is then displayed right side up. Registration is possible without rotation.



The buccal image is then displayed upside down. When you begin the registration, the software detects this and automatically flips the image right side up.

Moving to the next step

- ✓ The step is completed.
 - Click the double arrow to proceed to the next mandatory step.
- or
- Click on the restoration icon in the object bar to start the preparation of this restoration immediately.

10.3 Finishing the phase

- ✓ The next phase is can be selected.
 - Click on the next phase.
- or
- Click on the double arrow.
 - ↩ The program switches over to the next phase.



11 CONNECT phase

In this phase, you can log in to the Sirona Connect portal (see "Sirona Connect portal [→ 48]").

You can open this phase by clicking in the phase bar on the "CONNECT" phase or on the double arrow in the step menu.

11.1 Sirona Connect portal

11.1.1 Log in to the portal

1. Enter user name and password.
2. Activate the relevant option if you want to save the user name and password.
3. In the step menu, click on "Ok".
 - ↳ The data are uploaded in parallel to the information being entered in the portal.

11.1.2 Check restoration information

You can check the restoration information in the first step.

To the left of the overview the restoration information is shown for each restoration that was created in the "ADMINISTRATION" phase.

If the data are not correct you have to change them in the "ADMINISTRATION" phase. You can leave the portal with "Exit Portal".

If the data is correct you can click on "Enter Order Data" to move to the next step.

11.1.3 Enter order data

In this step you can select the lab to which the case is to be sent and enter the desired delivery date.

IMPORTANT

Maximum 5 labs

You can save a maximum of 5 labs in the list of your favorite labs.

Via "Edit your favourite laboratories" you can add labs to or delete labs from the list.

Under "Return Date" you can select the delivery date by clicking on the desired day in the calendar. Under "Time" you can also state a delivery time.

Then click on "Add Additional Information" to go on to the next step.

11.1.4 Add additional information

In this step you must add the patient's gender and insurance type (Germany only).

Under "*Additional Instructions*" there is a free text field available for additional written information.

Using the "*Additional Files*" function you can send additional files (photos).

Then click "*Update list*" to move to the shopping cart.

11.1.5 Shopping cart

In the shopping cart you can check the order details, modify them or delete the order from the shopping cart.

Your current delivery and invoice address is displayed.

In the top left corner you can see the progress for loading the model file.

As soon as the file has been fully uploaded and all the information is correct, you can send the order to your lab via "*Submit Cart*". To do so under "*Verification*" you must enter your password and confirm it with "*Ok*". The order list is then inserted automatically.

11.1.6 Order list

All sent orders are displayed in the order list. The most recently sent order is always at the top.

You can filter the orders by the various statuses via the filter below the list.

In order to view the order details you must click the relevant order in the list so that it is highlighted in orange. Then you can view the details by clicking on "*View Order*" in the step menu.

Via the step menu you can call up individual items of information on the highlighted order.

12 Additional functions

12.1 Importing files from CEREC Connect SW 4.X software into CEREC SW 4.X software



- ✓ CEREC Connect SW 4.X software has been started.
- ✓ The validity of the 3D model is confirmed.
- 1. Open the system menu.
- 2. Select "*Export Case...*".
- 3. In file explorer select the desired saving location.
- 4. You can rename the file under file name.
- 5. Under file type select the *.dxd format.
- 6. Start the CEREC SW 4.X software.
- 7. Open the system menu.
- 8. Select "*Import Case...*".
- 9. Navigate to the directory in which you previously saved the file and select it.
- 10. Then click "*Open*".
 - ↳ The file opens in the "*ADMINISTRATION*" phase.
- 11. You can now proceed with the design process as normal.

Index

A

Angled optical impressions, 42

B

Buccal registration

Displacing an image, 25

Rotating an image, 25

C

contact surfaces

Virtual model, 29

Cut

Invert model area, 26

Remove model area, 25

D

Display objects

Lower jaw, 28

Transparency, 28

Trimmed model, 28

Upper jaw, 28

E

Entering the preparation margin

Automatic, 27

Manual, 27

Manual with intensity image, 27

I

impression

Export, 19

Import, 19

Save, 18

impression as

Save, 19

M

Manual

html format, 9

pdf format, 9

O

Optical impression

End teeth, 42

P

Phase

MODEL, 44

R

Restoration

Display height and thickness, 29

Measure distance, 30

Rotate

Buccal image, 46

Lower jaw and upper jaw, 44

S

Safety information, 7

Show bottom, 29

Show side areas, 29

Software

Uninstallation, 14

T

Tool

- Buccal registration, 25
- Entering the preparation margin, 27
- Reset model, 26
- Trim, 26

Tool wheel, 12, 27

- Use, 27

Tools, 24

Trim

- Discard part, 26
- Invert selection, 26

V

Views, 24

- Change, 24
- Enlarge, 24
- Reduce, 24

We reserve the right to make any alterations which may be required due to technical improvements.

© Sirona Dental Systems GmbH 2011-2012
D3534.208.02.02.02 03.2012

Sprache: englisch
Ä.-Nr.: 115 475

Printed in Germany

Sirona Dental Systems GmbH

Fabrikstraße 31
64625 Bensheim
Germany
www.sirona.com

in the USA:

Sirona Dental Systems LLC
4835 Sirona Drive, Suite 100
Charlotte, NC 28273
USA

Order No

63 61 963 D3534